



HILL STREET LONDON, W1J

£5,460

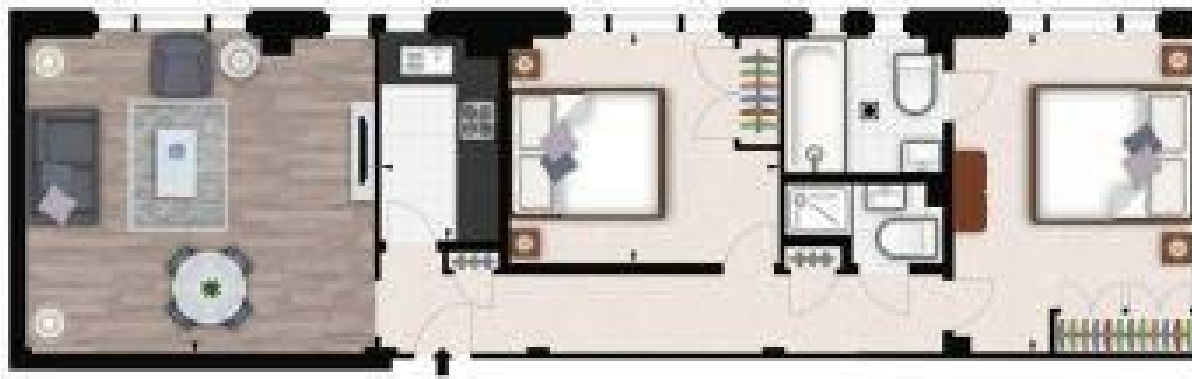
This stunning two double bedroom, the seventh-floor apartment is set within the heart of London's fashionable Mayfair with rear-facing views over Hay's Mews.

The apartment is set over 728 sq ft. It offers two spacious double bedrooms, a modern fitted bathroom, a spacious reception room, and a unique kitchenette with further benefits of storage space with access to a private gated communal garden.

Hill Street, benefits from spacious living accommodation, lift service, and on-site building manager, and is nestled conveniently between two of London's parks - Hyde Park and Green Park.

The transport links include underground stations which are Green Park Station, Bond Street station, and Marble Arch Station; all within a short stroll away.

PMP | INTERNATIONAL



Energy Efficiency Rating		
	Current	Potential
Very energy efficient - lower running costs		
(92 plus) A		
(81-91) B		
(69-80) C		
(55-68) D		
(39-54) E		
(21-38) F		
(1-20) G		
Not energy efficient - higher running costs		
England & Wales	EU Directive 2002/91/EC	

Agents Note: Whilst every care has been taken to prepare these particulars, they are for guidance purposes only. All measurements are approximate and are for general guidance purposes only and whilst every care has been taken to ensure their accuracy, they should not be relied upon and potential buyers/tenants are advised to recheck the measurements

London
PMP International
94 Belsize Lane
Belsize Park
London
NW3 5BE

020 7701 2878
info@pmpi.co.uk
www.pmpi.co.uk

PMP | INTERNATIONAL